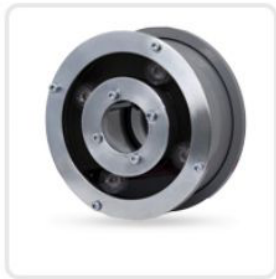


# ADJUSTABLE NOZZLE LIGHT



<b>Model No:</b>	SF 51
<b>Front cover&amp; Housing:</b>	SS+Alluminium
<b>Dimensions:</b>	D 130MM X H 50 MM (Nozzle Hole Size 40mm)
<b>Tempered glass:</b>	6MM Thickness
<b>LED Chip:</b>	CREE/EDISON
<b>WATTAGE</b>	4/8/12
<b>Cable gland:</b>	BRASS PG10
<b>Driver:</b>	Constant Current driver/Constant voltage
<b>Lenze:</b>	PC Cover
<b>Beam Angle Options:</b>	10° 20° 25° 30° 40° 45° 60° 90°
<b>Power Cable:</b>	2*1.0mm <sup>2</sup> PVC cable / 4*0.75mm <sup>2</sup> / 2*1.0 + 3*0.75mm <sup>2</sup> V D E rubber cable
<b>Protection Class:</b>	IP68
<b>Enviroment:</b>	Dry/Fountain/Nozzle Mounted
<b>Mouting Hardware:</b>	Surface Mounted System/Nozzle Fixed
<b>Lifetime:</b>	>40000H
<b>Color</b>	Red/Green/Blue/RGB/RGBW/WW/CW
<b>Voltage</b>	AC/DC12-24